



Integrated Informatics Inc.

www.integrated-informatics.com

Mining Support through Remote Sensing

Enhanced Value through Applied Analysis

Overview

Within the energy sector our projects support a broad spectrum of applications. These include management for open-pit mining, pipeline routing and construction, exploration and production, and the regulatory approval process.

The common thread in all of our projects is the application of appropriate technology such as Geographic Information Systems (GIS), Remote Sensing, Data Management, and Application Development. Our methods ensure our client's success through increased efficiencies and improved workflow processes.

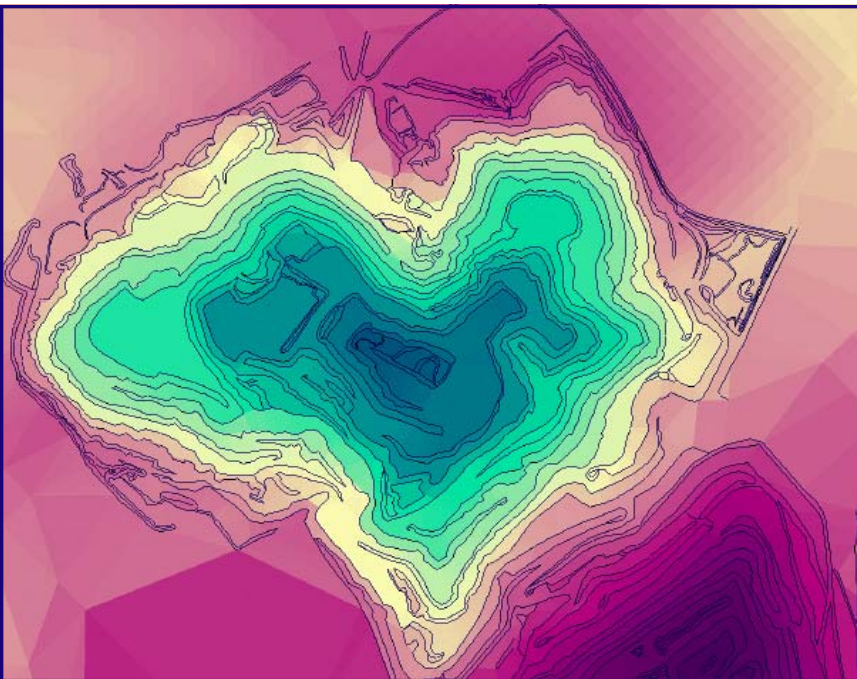
Mine Site Inventory

Through the use of GIS and digital mapping, photogrammetric approaches for estimating mine activity and calculating volumes are becoming more mainstream due to their accuracies and cost effectiveness.

Using imagery acquired over a period of time allows mine operators to easily track changes and activity within the mine. This information is then readily available for use in internal planning or external (regulator and stakeholder) communication.

Integrated Informatics's experiences have shown that while satellite imagery is able to perform adequately, aerial photography remains the premier option to ensure high quality results for volumes and products (e.g. digital terrain models and photographic backdrops).

Creating high fidelity digital terrain models (see left) is one of the core strengths of Integrated Informatics, but our knowledge does not end there. We have developed many processes and applications that allow us to effectively manage, utilize, and analyze digital terrain surfaces for a variety of uses. These include: accuracy assessments, slope stability, vegetation growth, terrain characterization, geotechnical hazards identification, cut-fill volume, and more.



Put our team to work for you! Our diverse suite of solutions is focused on establishing and enhancing the true value of GIS and applied data management in your organization.

#2, 1204 3rd Street SE • Calgary, AB • T2G 2S9 • gis@integrated-informatics.com

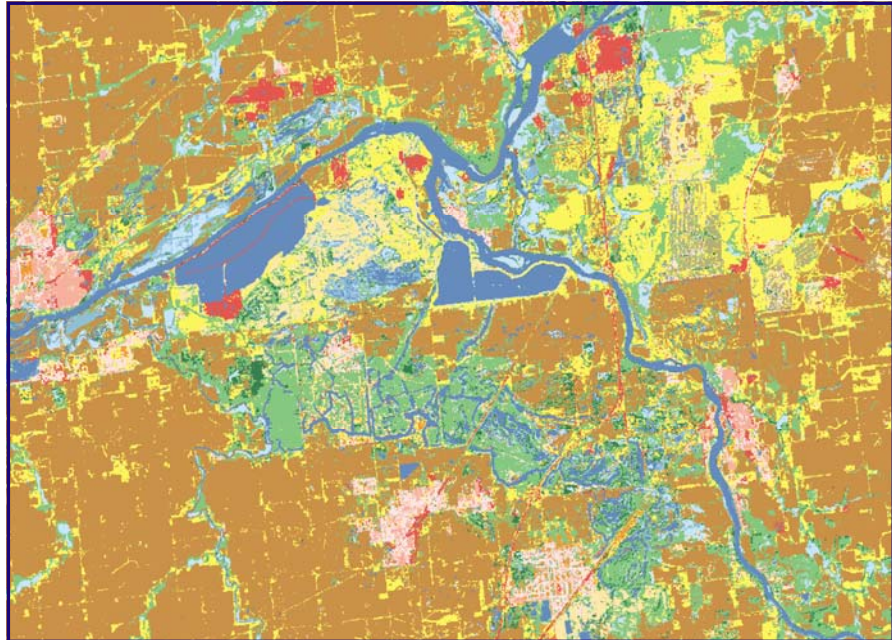


Environmental Monitoring, Management, and Reclamation

Mining affects the environment in many ways and while some effects can be only be measured in situ many can be monitored remotely through satellite imagery and/or aerial photography.

Our experiences have shown that satellite imagery combined with ground truthing provides energy companies with the ability to assess their affects on the environment with respect to land use and land cover changes (see right), vegetation type and vigor, wetlands delineation, and more.

A powerful capability of satellite imagery is its temporal repeatability. This allows companies to acquire imagery over a span of several seasons, or years, and use this information for trending the overall change to the surrounding landscape.



From the reclamation standpoint, the photographic record is able to document and describe disturbed areas, conservation efforts, and reclamation results for effective reclamation management as well as reporting to regulatory agencies and stakeholders.

Communication through Visualization

Credibility with regulators, non-government organizations, and stakeholders is key to any successful operation; much credibility can be gained through effective communication through a number of media. One of the most effective communication devices is the visualization of a virtual reality world. We achieve this through the use of a combination of GIS and Remote Sensing technologies (see left) to produce a highly effective communication tool.



Put our team to work for you! Our diverse suite of solutions is focused on establishing and enhancing the true value of GIS and applied data management in your organization.